

THE PHYSICS ROOM

GENERAL INFORMATION **ROOM** A CONTEMPORARY ART PROJECT SPACE

Structure

All external walls and supporting columns are constructed of concrete. Internal walls are constructed from wooden frames, lined with gib plasterboard. A slip wall constructed of MDF is installed along the external wall of exhibition space B (and the section of this wall closest to the storage room pivots to access power meters). The floor is varnished hardwood, except in the bathrooms, where it is tiles and concrete. The ceiling and ceiling beams are constructed from concrete (detailed ceiling measurements are available on request). The walls and ceiling are painted white.

Lighting

All bays are lit by double fluorescent tubes, except the two bays directly in front of the bathrooms. A three circuit track lighting system runs the length of exhibition space A and twice width ways in exhibition space B. We currently have 10 floodlights and 18 spotlights that can be fitted to this system. The track lighting system can also be used as a power source to a limited degree.

Access

The gallery space is on the second floor of the building and access is via the stair well or lift.

Windows

Windows overlook Tuam Street and High Street. All window frames are made from brass, painted flat white. For more detailed measurements please contact The Physics Room.

Hinged wall

The hinged wall which separates exhibition space A is 2780 high, and rests approximately 130mm below the ceiling beam. The wall swings back to lock against the wall as demonstrated in the floor plan, obscuring one set of windows and opening the gallery up into a single exhibition environment. It can also be removed from the gallery space and placed in the bay opposite the notice board. As this wall is quite heavy and fragile, any use of this function must be discussed well in advance with gallery staff.

Noise levels

As we share the premises with several other businesses it is important to be mindful of their need for quiet during normal work hours (9am–5pm weekdays). Please confine all heavy installation (such as drilling, hammering etc.) to outside this time. If at any stage this is not possible, please check with gallery staff first.

Blackout

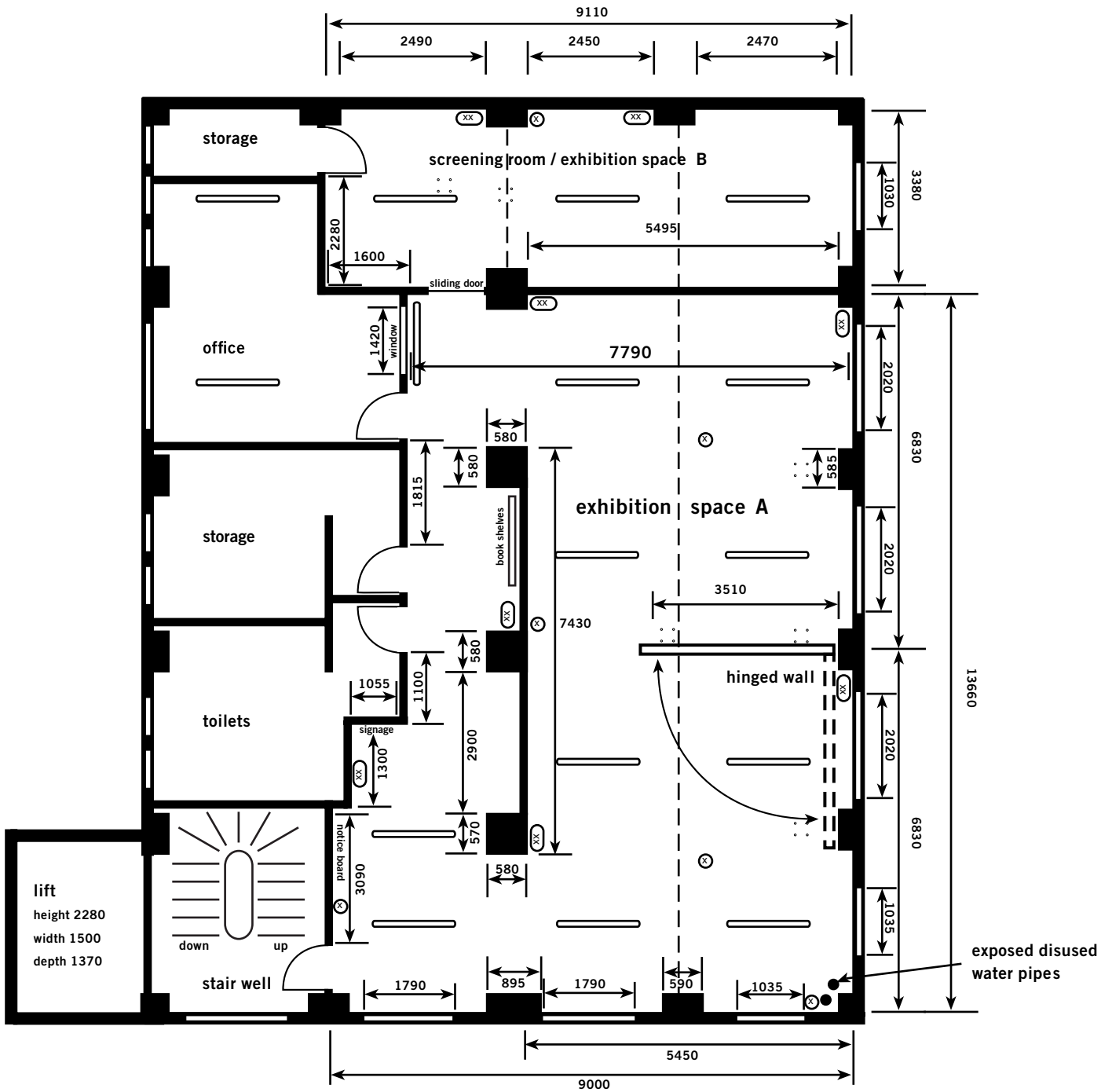
Exhibition space B is able to be fully blacked out. Exhibition space A is more open plan; we do have blinds fitted to each window but a complete blackout is not possible in this space.

Equipment

The Physics Room has basic installation equipment, including a concrete drill and basic carpentry tools, however anything more specialised will need to be supplied by the artist. We also have available DVD players, VCR players, television monitors, two data projectors, and an assortment of speakers, amps, and other sound equipment. We also have an assortment of plinths. As other shows may run simultaneously with your show, use of these items must be negotiated with gallery staff. Specialised or particular equipment needs may have to be sourced by the artist, please notify the gallery as soon as possible of any such requirements.

THE PHYSICS ROOM

FLOOR PLAN A CONTEMPORARY ART PROJECT SPACE



All measurements in millimeters

- (X) Power point
- (XX) Double power point
- - - Track lighting
- Fluorescent
- ∴ Existing ceiling projector mount lugs

Door width: 810 (except main entrance: 900)

Door height: 1980

Ceiling height: 3360 (at highest point), 2900 (at lowest point under beam)

Window height from floor: 710

Window height: 2200

Window sill depth: 170

exposed disused water pipes